

ELLE DECOR®

PRETTY
PARIS
APARTMENTS.

GORGEOUS
BATH
ACCESSORIES

OUTDOOR
ROOMS

SUMMER
ROMANCE

AUGUST/
SEPTEMBER
2000 \$3.95





"Benches are for contemplating a garden, view, or vista," Pons explains. "They have to be comfortable."

the 10 most glorio

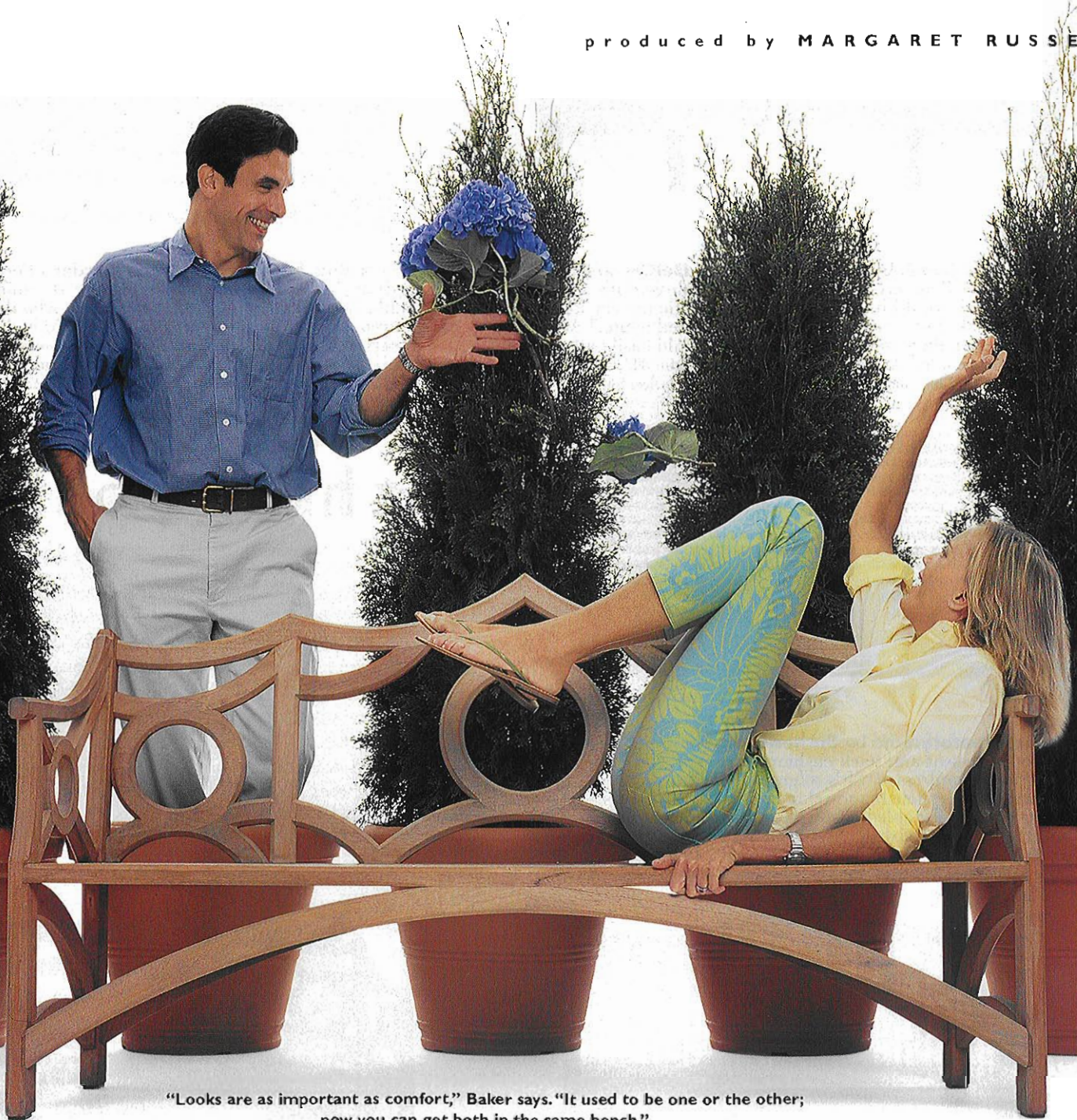
Landscape designers **Martha Baker** and **Miguel Pons** agree: these

text by JULIA SZABO

photography by LIZZIE HIMMEL

produced by MARGARET RUSSELL

GROOMING: BELLA PILAR FOR SALLY HARLOR; ARBORVITAE AND POT'S
FROM THE CHELSEA GARDEN CENTER EAST; SEE RESOURCES



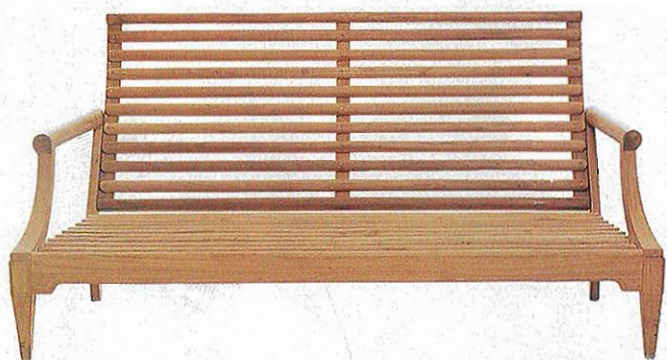
"Looks are as important as comfort," Baker says. "It used to be one or the other;
now you can get both in the same bench."

us garden benches

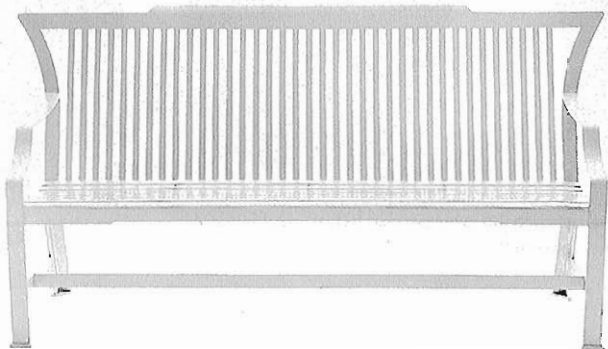
outdoor perches are as easy on the eyes as they are on the seat!



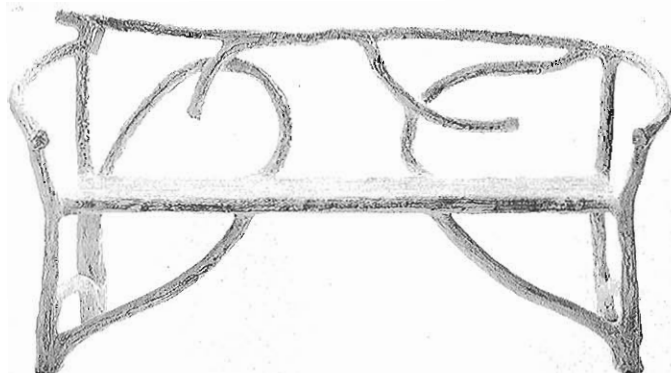
1. Cloisters Bench by Gaze Burvill from DelGreco & Co. "I love this," Pons says. "It's very comfortable *and* it's a focal point; plus, it would fit any setting, from rustic to very formal. I like the oak, but it would be fabulous painted white." Adds Baker, "I love the curve of the back. This could easily accommodate three people." Length: 65"; depth: 20½"; height: 31"; seat height: 17"; weight: 100 lbs.; material: oak; delivery: 8 weeks; price: \$4,000



3. Conservatory Sofa by Sutherland Even though it's also offered with seat and back cushions, the experts think this bench looks better undressed. "It's so graphic-looking," Baker notes. "You can really slouch and relax in this." Pons agrees: "This is extremely comfortable—just look at the roundness of the slats and the way it's finished. And it's a very good size." Length: 72"; depth: 35"; height: 36"; seat height: 12"; weight: 110 lbs.; material: hand-carved teak (available with cushions); delivery: 4–6 weeks; price: \$3,625



4. Withers Bench by McKinnon and Harris from DelGreco & Co. "This is made so beautifully," Baker says. "It's airplane-grade aluminum and very aerodynamic. Furniture that looks good in a modern garden is hard to find, but this bench would fit." Adds Pons: "I love the lines. The minimalist style would look perfect in a more architectural setting, like a Japanese garden." Length: 75"; depth: 17"; height: 39"; seat height: 17"; weight: 85 lbs.; material: brushed wrought-aluminum with clear, powder-coated finish; delivery: 6–8 weeks; price: \$4,750



2. Faux Bois Bench from Mecox Gardens Both designers fell hard for this sculptural concrete bench. "It reminds me of Caudi," says Baker, "or Hector Guimard, who designed the Art Nouveau Paris Métro station signs. It would be beautiful against a grayish-white gravel pathway, for a tone-on-tone look." Adds Pons, "It would also look great on a minimal urban terrace, in an earth tone like adobe." Length: 70"; depth: 27"; height: 35"; seat height: 19½"; weight: 175 lbs.; material: whitewashed concrete with steel-bar reinforcing; delivery: 8 weeks; price: \$3,950

the top 10: h

"People want their porches, terraces, and pool areas to look like outdoor living rooms—which is really what they are," Baker says. Accordingly, many benches are like sofas, only firmer. Here's what to remember when selecting one for your alfresco den.

- Most garden benches are designed to look even more beautiful once they've become weathered. If you'd rather your teak furniture didn't fade to gray, remember to oil it regularly per the manufacturer's instructions.
- Benches made of willow, coated with paint, or stained are

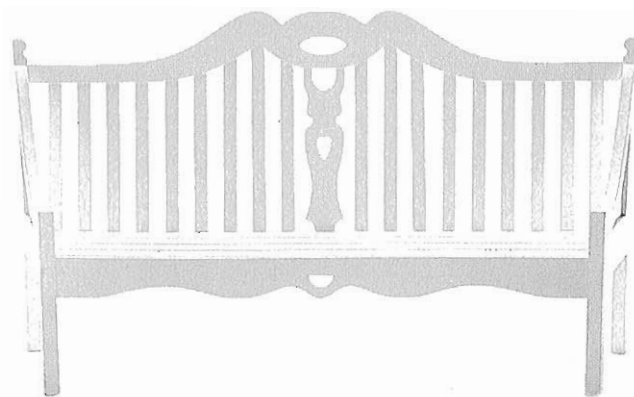


5. Montgomery Place Bench from Munder-Skiles "Very formal and serious," says Pons. "It really requires a traditional setting. The seat makes you sit up straight, but it's a great look." Baker adds, "This has the formality of Hepplewhite furniture. I'd put it in an allée or garden—but it would look just as handsome in the front hall. I'd paint it white or dark green, though, to play up the decorative detail." Length: 66"; depth: 20½"; height: 33"; seat height: 17"; weight: 60 lbs.; material: mahogany; delivery: immediate or up to 12 weeks; price: \$4,100

All measurements, delivery times, and



6. Willow Love Seat from Mecox Gardens The fairy-tale charm of still-green willow branches was not lost on our experts. "This is very funky," Pons says. "It belongs in a woodsy, rustic garden." Baker calls it "a real artisan's piece, with the unpretentious feel of a do-it-yourself project. But if you want to retain its original color, it should be moved to a protected spot during bad weather." Length: 71"; depth: 35"; height: 33"; seat height: 18"; weight: 100 lbs.; material: willow and poplar; delivery: 8 weeks; price: \$995



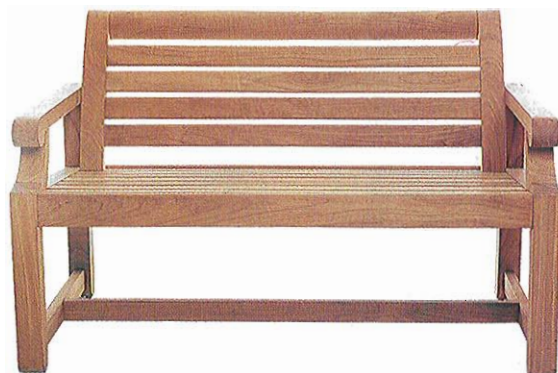
7. Virginia Bench by Treillage "With this bench, you'd need to have a huge space because the scale is so large," Pons observes. Baker concurs: "It has a whimsical Alice in Wonderland quality. The back mimics the railings of a porch, so it'd be perfect on one. It's also cool for outdoor dining, at a long table with one of these on either side." Length: 82"; depth: 19"; height: 45"; seat height: 16½"; weight: 75 lbs.; material: painted mahogany; delivery: immediate or up to 6 weeks; price: \$2,800

ow they rate

obviously more susceptible to the elements. Prolong their prime by placing them in a semiexposed spot, such as a porch, or covering them with a weatherproof tarp when they're not in use.

Some benches cry out for cushions, while others are plenty comfy without. Whether your settee comes with cushions made of fade-resistant indoor-outdoor polyester fabric or you add your own, store pillows indoors or in a rainproof storage bin.

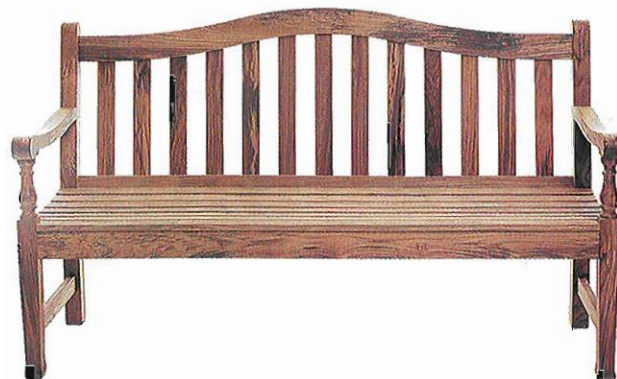
Don't be afraid to think big—this is about furnishing the great outdoors, after all. "You can't go wrong in overscaling," Baker says.



8. First Cabin Landscape Bench by Summit from DelGreco & Co. The strong, solid teak appealed to both our experts, and Pons thinks it has transition potential: "The design would fit equally well in both traditional and modern settings," he says. "The back has a nice angle," Baker offers. "The sole drawback is that it only fits two people. I'd definitely order the longer version." Length: 52"; depth: 28"; height: 34"; seat height: 18"; weight: 85 lbs.; material: teak; delivery: 4–6 weeks; price: \$3,100



9. Regent Settee by Williams-Sonoma "This is certainly a classic style in outdoor furniture," Baker says, "yet its horizontal slats give it a modern air. It's good-looking, and the finish of the wood is very pleasing and worth preserving." Pons says: "Make sure you keep it oiled to prevent the wood from turning gray." Length: 66"; depth: 30"; height: 37"; seat height: 16"; weight: 142 lbs.; material: teak with weather-resistant cushion; delivery: 4 weeks; price: \$1,935



10. Waveney Seat by Barlow Tyrie "This is the sort of classic bench you see in a park," Pons says. "But it would look amazing anywhere—even indoors, placed in an entry hall or kitchen." Adds Baker, "This design has been around forever, and is often reproduced—with good reason." Length: 57½"; depth: 23"; height: 35"; seat height: 16"; weight: 41 lbs.; material: teak; delivery: 7–10 days; price: \$919

resources

Wicker (979 Third Ave., New York, NY 10022; 212-758-0472).

Page 181: Headboard and curtains in *Floral Toile* fabric by *Colefax and Fowler*, to the trade through *Covetart & Tout* (for showrooms: 212-647-6900).

Inside Out

Pages 182-83: Interior design by *David Easton* (212-334-3820). Landscape design by *Nancy Goslee Power* (310-264-0266).

Landscape lighting by *Greg Yale Landscape Illumination* (631-287-2132). Rattan furniture from the *Piscaya Collection*, designed by *David Easton*, to the trade from *Walters Wicker* (979 Third Ave., New York, NY 10022; 212-758-0472).

Pages 184-85: Janet Marec of *J. Marec & Co.* (946 Madison Avenue, New York, NY 10021; 212-517-7665). Gazebo designed by *Manuel Fernandez-Casteleiro* of *Parsons + Fernandez-Casteleiro* (212-431-4310).

Pages 186-87: Architecture and design by *Hermes Mallea, AIA*, and *Carey C. Maloney* of *M (Group) Inc.* (212-874-0773). Landscape design by *Tim Du Val* of *Plant Specialists* (718-392-9404). Crill by *Lynx Crills* (for stores: 323-838-1770). Kilim rug, to the trade from *Symbourgh International* (102 Madison Ave., New York, NY 10016; 212-686-3756). Next to fireplace, *Athena iron furniture*, to the trade from *DelGreco & Co.* (232 E. 59th St., New York, NY 10022; 888-376-7285 or 212-688-5310). On rooftop, *Etruscan iron furniture*, to the trade from *DelGreco & Co.* **Pages 188-89:** Garden and teahouse design by *Pierre Sernet* (212-772-9100). Teahouse built by *Kai Ito* of *Ito Associates* (212-477-6188).

The Ten Most Glamorous Garden Benches

Pages 190-93: *Martha Baker*, landscape designer (212-517-9060). *Miguel Pons* of *Miguel Pons Landscape Design* (212-255-6310).

Pages 190-91: *Arboretum* trees, \$150 ea., and *Thermostone pots* in terra-cotta finish, \$150 ea., from *Chelsea Garden Center East* (321 Bowery, New York, NY 10003; 877-846-0565 or 212-777-4500).

Pages 192-93: 1 *Cloisters Bench*, \$4,000, other sizes available, by *Gaze Burrill*, to the trade from *DelGreco & Co.* (232 E. 59th St., New York, NY 10022; 888-376-7285 or 212-688-5310). 2 *Faux Bois Bench*, #FN-POT-002, \$3,950, also available in natural finish and other sizes, from *Mecox Gardens* (257 County Rd. 39A, Southampton, NY 11968; 631-287-5015). 3 *Conservatory Sofa*, #1100, \$3,625, cushions and custom finishes available, to the trade from *Sutherland* (for showrooms: 800-717-TEAK or 214-638-4161). 4 *Withers Bench*, \$4,750, other finishes and colors available, by *McKinnon and Harris*, to the trade from *DelGreco & Co.* For other sources, call *McKinnon and Harris* (804-358-2385).

5 *Montgomery Place Bench*, \$4,100, custom sizes, woods, and finishes available, from *Munder-Skiles* (799 Madison Ave., New York, NY 10021; 212-717-0150). 6 *Willow Love Seat*, \$995, from *Mecox Gardens*. 7 *Virginia*

Bench, \$2,800, custom finishes and colors available, by *Treillage* (418 E. 75th St., New York, NY 10021; 212-535-2288). 8 *First Cabin Landscape Bench*, #FC271, \$3,100, other sizes and finishes available, designed by *Kipp Stewart* for *Summit Furniture*, to the trade from *DelGreco & Co.* For other sources, call *Summit Furniture* (831-375-7811).

9 *Regent Settee*, \$1,935, by *Williams-Sonoma* (for catalogue: 800-541-2233). 10 *Waveney Seat*, \$919, other sizes available, by *Barlow Tyrie* (for information: 800-451-7467).

The Loft Life

Pages 194-97: Interior design by *Laura Bohn* of *Laura Bohn Design Associates* (212-645-3636). General contracting by *Bohn/Fiore, Inc.* (212-929-3610). Upholstery by *K. Flam Associates, Inc.* (718-665-3140).

Page 194: Dining table by *LSZ Custom Woodwork* (718-784-4331). Rock Harbor paint with River Rock finish, #RR03B, by *Ralph Lauren Home* (for stores: 212-642-8700).

Page 195: Floors by *East Side Floor Services Ltd.* (212-996-1800). Sofa (left) upholstered in *Tammba fabric*, #5905, to the trade from *Donghia* (for showrooms: 800-DONGHIA or 212-935-3713). Wooden blinds, to the trade from *Nanik* (for information: 877-88-NANIK or 877-886-2645). Photograph by *Lynn Davis* from *Eduyenn Houk Gallery* (745 Fifth Ave., New York, NY 10151; 212-750-7070).

Page 196: Kitchen cabinetry by *LSZ Custom Woodwork* (718-784-4331). In living room, sofa upholstered in *Isadora linen fabric*, #8020-08, to the trade from *Donghia* (for showrooms: 800-DONGHIA or 212-935-3713). *Landscape 1*, photo silkscreen on linen, 1991, by *Don Freeman*, from *Jayne H. Baum, New York* (26 Grove St., New York, NY 10014; 212-255-9286). Armchairs upholstered in *Adamo Basket fabric*, #6070-05, to the trade from *Glant Textiles Corporation* (for showrooms: 206-725-4444).

Page 197: In bathroom, *Studio X chair*, to the trade from *Donghia* (for showrooms: 800-DONGHIA or 212-935-3713). In bedroom, *bed linens and blanket* from *Nancy Koltes At Home* (31 Spring St., New York, NY 10012; 212-219-2271).

Bathing Beauties

Page 199: *Elgydium toothbrush*, \$7.50, from *Ad Hoc Softwares* (136 Wooster St., New York, NY 10012; 888-748-4852 or 212-925-2652). *White resin toothbrush holder*, \$36, *soap dispenser*, \$64, *tumbler*, \$35, *soap dish*, \$46, and *tray*, \$84, by *Martha Sturdy* from *Waterworks Collection* (for information: 800-899-6757 or 203-546-6000). *Verveine linen-and-room freshener*, \$15, by *Naturopathica* (for information or to order: 800-669-7618). *Côté Bastide bath salts and cream*, \$38 ea., from *Waterworks Collection*. *Beadboard ceramic tile*, #HTA107, 6"x9", \$45.55/sq. ft., and *Aero nickel lavatory faucet set*, \$1,025, by *Waterworks* (for information: 800-899-6757 or 203-546-6000). *Beadboard panel* by *New England Classic* (for information: 888-880-6324 or 207-773-6144). *Blue lucite body*

brush, \$28.50, from *Ad Hoc Softwares*.

Striped cotton beach towel, \$46, from *Chambers* (to order: 800-334-9790).

Page 200: *Bronze tissue holder*, \$100, by *Calvin Klein Home* (for stores: 800-294-7978 or 212-292-9000). *Round horn bowl and Bath pumice stone*, \$40 and \$10 respectively, from *Waterworks Collection* (for information: 800-899-6757 or 203-546-6000). *Bronze round lidded box*, \$90, by *Calvin Klein Home*. *Vessels Conical Bell lavatory sink*, #K-2200-CY1, of glazed vitreous china, \$430, by *Kohler Co.* (for information: 800-4-KOHLER or 920-457-4441). *Protein Concentrate Shampoo*, \$22.50/16 fl. oz., by *Kiehls* (for information: 800-Kiehls-1 or 800-Kiehls-2). *Acorn woven bowl*, \$10, and *pine soap dish*, \$9, from *ABC Carpet & Home* (888 Broadway, New York, NY 10003; 212-473-3000). *Lightweight cement soap dish*, \$75, by *Calvin Klein Home*. *Teak bath mat* with leather binding, 19½"x35½", \$165, from *Chambers* (to order: 800-334-9790).

Page 201: *Stone cup*, \$40, from *ABC Carpet & Home* (888 Broadway, New York, NY 10003; 212-473-3000). *Toothbrushes*, \$4.25 ea., by *Acca Kappa* from *Ad Hoc Softwares* (136 Wooster St., New York, NY 10012; 888-748-4852 or 212-925-2652). *Carrara Nero basket-weave tile*, of marble, \$12.90/9½"-sq. tile, from *Ann Sacks* (for information: 800-278-8453 or 503-281-7751). *For Town faucet set* in nickel silver, from the *Michael Smith Collection*, to the trade from *Kallista* (for information: 888-4-KALLISTA or 920-457-4441). *Chanel No. 5 After Bath Powder*, \$48.50, by *Chanel* (for stores: 800-550-0005). *Extendible nickel shave/make-up mirror*, #68015, \$535, by *Czech & Speake* (for information: 800-632-4165). *Avenue cotton bath towel*, in ebony, \$24, by *Ralph Lauren Home* (for stores: 212-642-8700).

Page 202: *Crest Collection cotton bath towel*, in simply lilac, \$20, by *Tommy Hilfiger Home* (for information: 800-237-0658). *Brass-and-ceramic hand shower*, from ceramic lever wall-mounted bath shower mixer set, #EM9003-AC, to the trade from *Lefroy Brooks* (for information: 212-226-2242). *Brass train rack*, #HBT44, \$600, other finishes available, from *Urban Archaeology* (143 Franklin St., New York, NY 10013; 212-431-4646). *Brass freestanding shave/make-up mirror*, #68115, \$430, by *Czech & Speake* (for information: 800-632-4165). *Brass hanging soap dish*, #HBT93, \$210, other finishes available, from *Urban Archaeology*. *Sea Marine and Ozone Carbaline soaps*, \$8 ea., from *Ad Hoc Softwares* (136 Wooster St., New York, NY 10012; 888-748-4852 or 212-925-2652). **Page 203:** *Vinyl Infinity Vessel*, \$18, by *Karim Rashid* from *Totem* (for information: 212-925-5506). *Gucci Rush body cream*, 5 oz., \$55, by *Gucci* (for stores: 800-388-6785 or 212-751-3212). *D&C Sun Milk*, SPF 8, 5 oz., \$25, by *D&C Dolce & Gabbana* (for information: 212-965-8000). *Cirrus widespread lavatory faucet with sheetflow spout and ball handles* in polished chrome, #K-7914-8, \$1,717, by *Kohler Co.* (for information: 800-4-KOHLER or 920-457-4441). *Red acrylic*

box, \$180, by *Albrizzi Design from Belvedere* (1200-A Howell Mill Rd., Atlanta, GA 30318; 404-352-1942). **Polo Beach** cotton towel, in lemon, by *Ralph Lauren Home* (for stores: 212-642-8700).

Etcetera

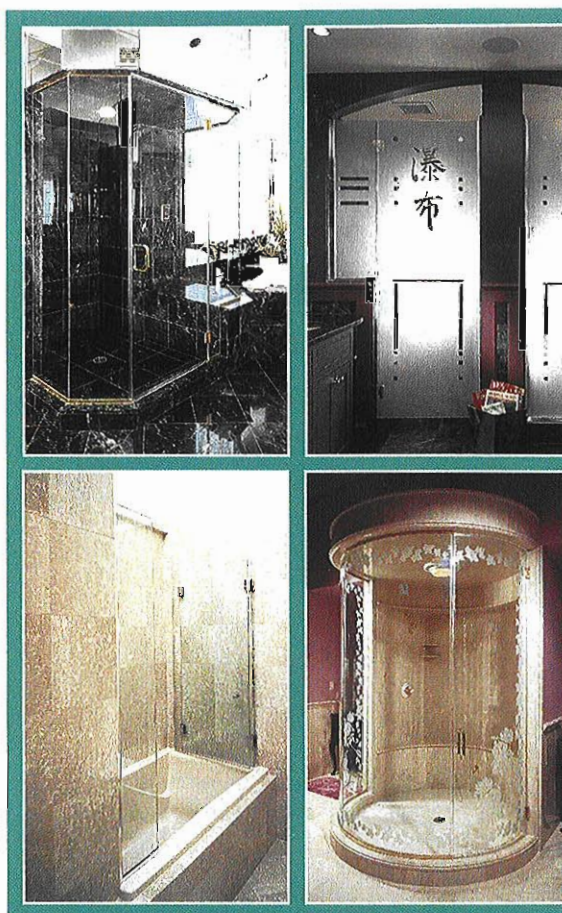
Page 220: **Palm Tree** cotton place mat, 13"x19", \$15, and 20"-sq. napkin, \$10, from *ABC Carpet & Home* (888 Broadway, New York, NY 10003; 212-473-3000). **Damask Border** cotton place mat, 14"x19", \$5, and 22"-sq. napkin, \$5, by *Calvin Klein Home* (654 Madison Ave., New York, NY 10021; 800-294-7978 or 212-292-9000). **Oval Wood Bead** place mat, 13"x20", \$65, by *The Sak Home* (for stores: 888-THE-SAK1). **Ochre linen** napkin, 20"sq., \$25, by *Daisy Hill from Barneys New York* (for information: 212-826-8900). **Three Lines** embroidery place mat, 16"x20", and 22"-sq. napkin, \$140/set, by *Pratesi* (829 Madison Ave., New York, NY 10021; 212-288-2315). **Vine Appliqué** cotton organdy place mat, 14"x20", \$14, and 20"-sq. cotton organdy napkin edged in poplin, \$8, by *Triangle Studio from Distant Origin* (153 Mercer St., New York, NY 10012; 212-941-0024). For other sources, call *Triangle Studio* (800-820-4707 or 415-826-4700). **Bedford** organdy place mat, 14"x20", \$12, and 20"-sq. napkin, \$8, designed by *Joseph Abboud* for *Aron Home Fashions* (for stores: 212-683-0830). **Place mat**, 20"x10", \$45, and 18"-sq. napkin, \$29, by *Muriel Brandolini* from *Barneys New York* (for information: 212-826-8900). **Hand-painted Bamboo** place mat, 14"x18", \$35, by *Jane Krulik* for *Chateau X*, from *Hoagland's of Greenwich* (175 Greenwich Ave., Greenwich, CT 06830; 203-869-2127) and *Cellophane Bubble* napkin, 21"sq., \$30, by *Jane Krulik* for *Chateau X*, from *Bergdorf Goodman* (for information: 212-872-2527). **Feuilles d'Oliviers** linen place mat, 18"x13½", and 15½"-sq. napkin, \$110/set, from *D. Porthault* (18 E. 69th St., New York, NY 10021; 212-688-1660).

Addendum

Artwork in the Jabban house ("Summer Splash," June/July) includes work by *Jennifer Cross*, represented by *Katharina Rich Perlow Gallery* (212-644-7171); *Robert Dash* (631-537-0802); *John MacIlhinnie* (631-726-5602); and *John Ryman* (631-283-7373).

ELLE DECOR (ISSN #1046-1957) is published bimonthly, except monthly in April, May, October, and November, by Hachette Filipacchi Magazines, Inc., 1633 Broadway, New York, NY 10019. Periodical postage paid at New York, NY 10001 and at additional mailing offices. One-year subscription rate \$29.00 for U.S.A. and possessions, \$39.00 for Canada (includes 7% GST) and other foreign; Canadian Business Number 130479439RT, IPN Sales Agreement Number 784257. POSTMASTER: Send Form 3579, subscriptions, address changes and adjustments to ELLE DECOR, P.O. Box 55851, Boulder, CO 80322-5851. To order a subscription, call 303-604-1464; fax, 303-604-7455. To order back issues, send check or money order for \$7.95 each (\$9.25 Canada; \$14.25 other foreign) to: ISI/ELLE DECOR, P.O. Box 454, East Rutherford, NJ 07073, or call 201-528-1521. Copyright ©2000 by Hachette Filipacchi Magazines, Inc. All rights reserved. Reproduction without permission is strictly prohibited. Printed in the U.S.A.

Occasionally we share our information with other reputable companies whose products and services might interest you. If you prefer not to participate in this opportunity, please call the following number and indicate that to the operator: 303-604-1464.



Design Elegance for your Bath!

The innovative Duschqueen line of tub and shower enclosures features:

- Frameless & Framed Enclosures
- Latest Glass Techniques including Bent, Curved, Neo, Bifold & Notched
- Choice of Clear, Etched & UltraGlas®
- Complementing Accessories & Hardware
- Custom Design Availability

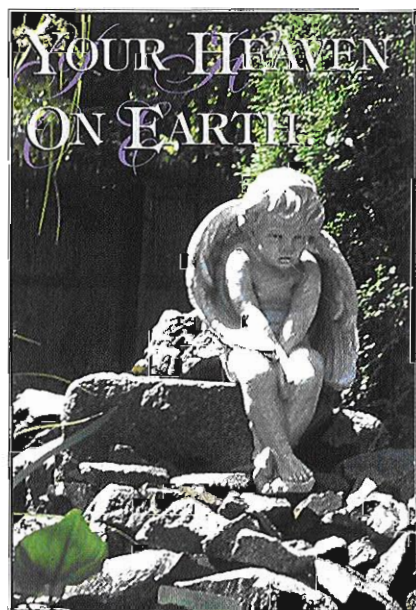


DUSCHQUEEN, INC.
CUSTOM BATH ENCLOSURES

The Innovative Leader
of Quality Bath Enclosures

800-348-8080

www.duschqueeninc.com

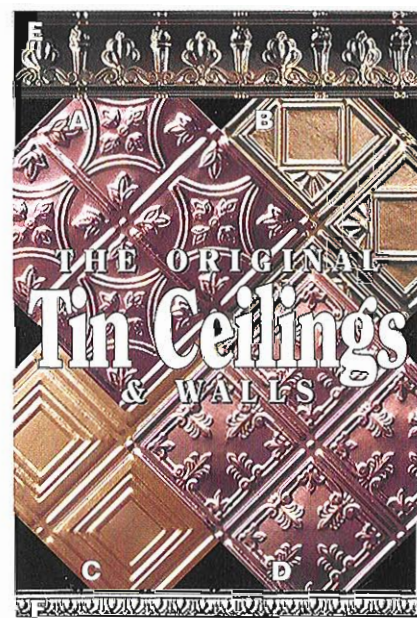


LILYPONS
WATER GARDENS

1-800-723-7667

WWW.LILYPONS.COM

Call For Your **FREE**
Catalog Today!



- 35 Designs in 2'x2' lay-in, 2'x4', 2'x8' nail-up
- Steel, White, Brass, Copper, Chrome
- Stainless steel for kitchen backsplashes
- 15 Cornice styles • Pre-cut miters
- Call for Technical Assistance
- Send \$1 for brochure

aa-abbingdon affiliates inc.

Dept. ED, 2149 Utica Ave., Bklyn., New York 11234
(718) 258-8333 • Fax: (718) 338-2739 • www.abbingdon.com